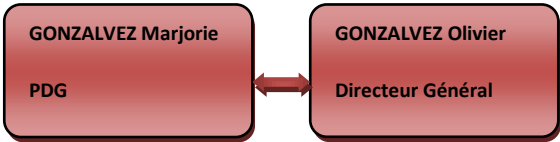
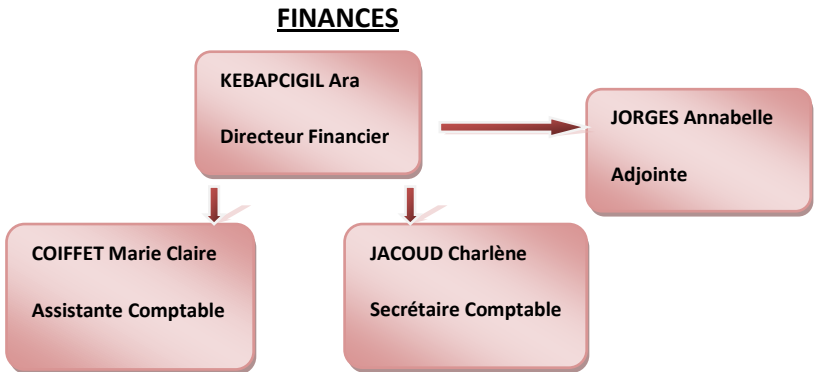
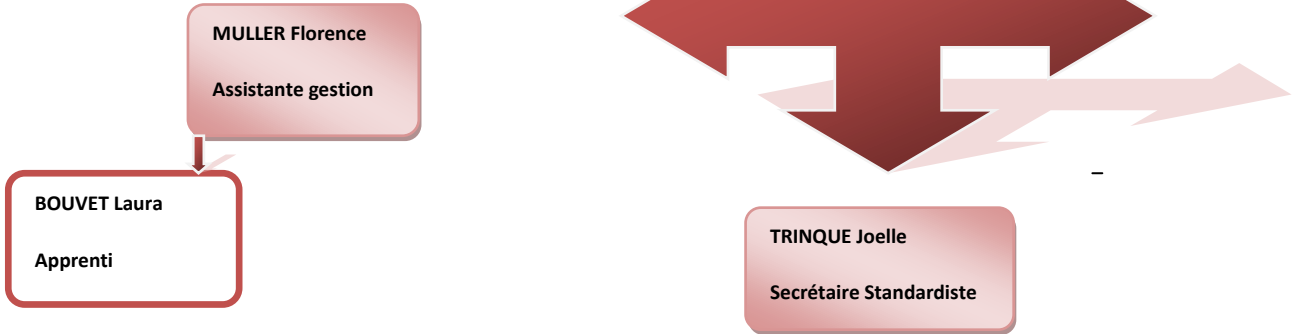




# ORGANIGRAMME DU PERSONNEL 2011



## DIRECTION

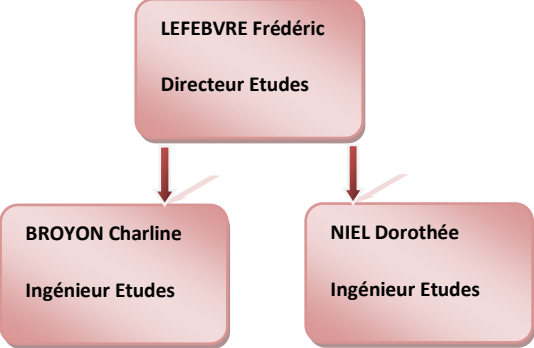


## FINANCES

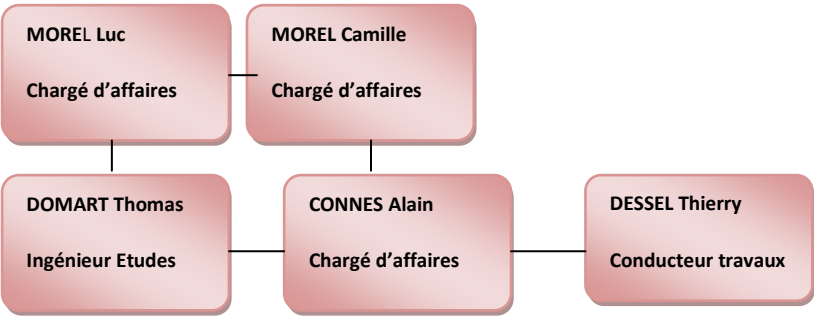
## EXPLOITATION TRAVAUX



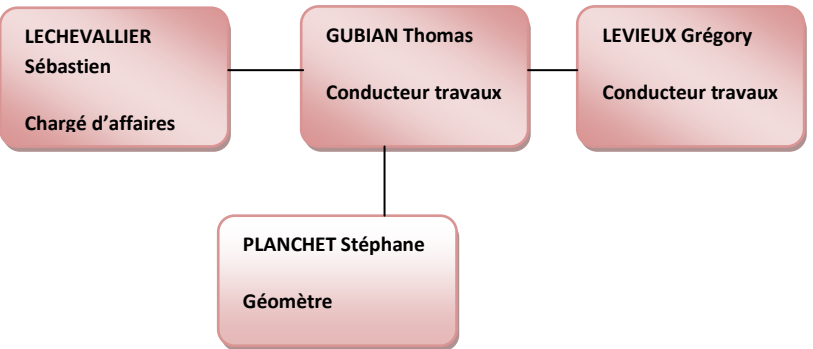
## BUREAU ETUDES



## MICROPIEUX/PIEUX/JET GROUTING/BETON PROJETE

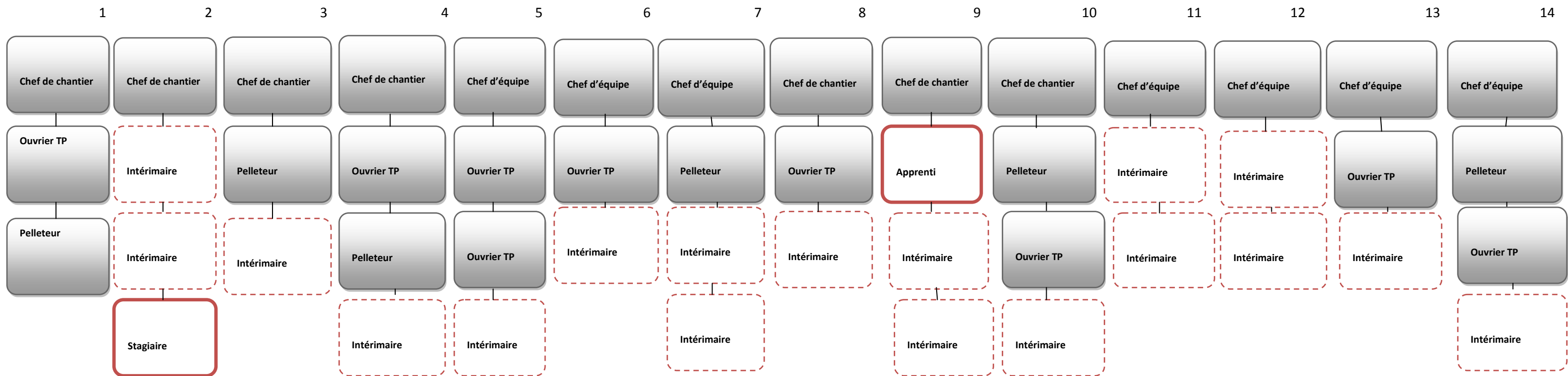


## BERLINOISES/PALPLANCHES/REPRISES EN SOUS ŒUVRE/TIRANTS





### EQUIPES DE PRODUCTION SUR CHANTIERS



### DEPOT DE MORNANT

